



Halifax, N.S.: Railway yards near scene of the disaster showing temporary buildings being erected to house the work men engaged in cleaning up. The narrows at Halifax Harbour to the right.

11206876063_d1d886cea3



Halifax, N.S.: Ruins of car erecting shed.

11206875603_199e1f3c90



Halifax, N.S.: Another view of the ruins of the car erecting shed at Nova Scotia Works.

11206774456_7a6eb84f70



Halifax, N.S.: Railway yards near scene of the disaster. Explosion occurred at spot marked (x) to the right. Note the steam boat which was thrown up on the top of the wharf by the force of the explosion.

11206874973_ab9c6415df



Halifax, N.S.: The spot where the explosion occurred marked (x). The wrecked steam boat in the foreground is the Stella Maris, which was making an endeavour to tow the Mont Blanc when the explosion occurred.

11206762614_e9a6c56ec5



Halifax, N.S.: Ruins of the Sugar Refinery. A ten story building.

11206762264_5b7f54813d



Halifax, N.S.: The wrecked buildings on Barrington Street, looking over the dry dock towards Tufts Cove, Dartmouth.

11206762044_dbb0edcd86



Halifax, N.S.: Barrington Street about one half of a mile north of the place where the explosion occurred.

11206772886_a308aa4725



Halifax, N.S.: The Alexander McKay School; a brick and concrete building which had just been completed. The interior of this building was badly wrecked. Now used as a boarding house, and with a wooden addition at the back accommodating over 1800 men.

11206873453_6969141442



Halifax, N.S.: The railway yards near the scene of the disaster. Concrete building on the right marked (x) Hillis' Foundry. Immediately after the explosion a tidal wave swept of the side of the hill to this foundry.

11206750035_21072b8a0e



Halifax, N.S.: View from Barrington Street showing the wreck of Lunch's Bakery. Belgian Relief Ship Imo ashore on the Dartmouth side of the Harbour.

11206749615_fa77d27834



Halifax, N.S.: Railway yards near the scene of the disaster. Large brick building at extreme right Wellington Barracks.

11206721105_d5190d546d



Halifax, N.S.: Barrington Street and Hillis' Foundry on the left. Scene of the disaster marked with (x).

11206771576_5c7fd54ab9



Halifax, N.S.: Shore immediately adjacent to the scene of the disaster. Steam boat thrown up on top of the wharf at the extreme right.

11206748865_81d7d02002



Halifax, N.S.: Railway yards near the scene of the disaster. Wreckage principally lumber, etc., thrown off of the adjacent docks. (Also, metal remnants of the overhead footbridge - JHZ)

11206759504_eedc1ea24a



Halifax, N.S.: Burned District. The narrows of Halifax Harbour marked with (x). Bedford Basin marked with (xx).

11206759064_90f7bb58f0



Halifax, N.S.: A Church (?)

11206747525_61dea4b6b2



Halifax, N.S.: Robie Street Methodist Church, about two and one half miles from the scene of the disaster.

11206870453_349a5a3bde



Halifax, N.S.: Railway yards just north of the scene of the disaster. Note the freight car marked (x), which was washed from the Halifax side to the Dartmouth side by a tidal wave. The narrows of Halifax Harbour marked (xx). Note the ships in Bedford Basin marked (xxx).

11206769076_b9b338edb9



Halifax, N.S.: Another view of the railway yards showing the progress of the cleaning up.

11206757214_7752ba3672



Halifax, N.S.: D.A.R. freight shed, Halifax, N.S.

11206868993_9656aa3c47



Halifax, N.S.: Canadian Government railway station, Halifax, N.S.

11206767646_093ef31200



Halifax, N.S.: Railway Pier #4 showing progress of repairs.

11206755964_7c22063386



Halifax, N.S.: Powder House of the C.G.R.

11206766626_ed8a2acf7



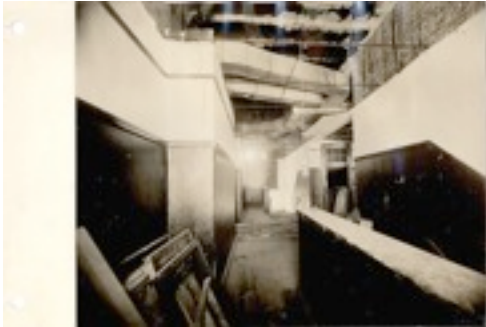
Halifax, N.S.: St. Patrick's Church, Halifax N.S., nearly a mile from the scene of the disaster.

11206867213_f622719cae



Halifax, N.S.: Grafton Street Methodist Church, nearly two miles from the scene of the disaster.

11206765376_24515e2d6a



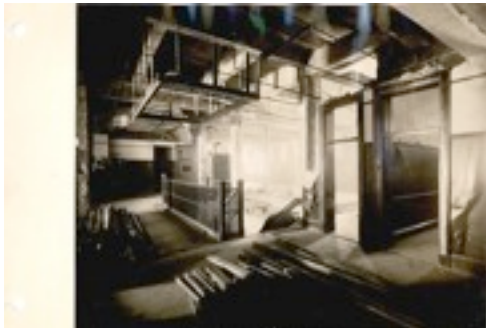
Halifax, N.S.: Interior of Alexander McKay School, showing the destructive force of the explosion.

11206764726_891234f1b5



Halifax, N.S.: Interior of Alexander McKay School, showing the destructive force of the explosion.

11206742465_9d7ecd814e



Halifax, N.S.: Interior of Alexander McKay School, showing the destructive force of the explosion.

11206864913_7509840a53



Halifax, N.S.: Interior of Alexander McKay School, showing the destructive force of the explosion.

11206741715_f9d82353d8



Halifax, N.S.: Interior of Alexander McKay School, showing the destructive force of the explosion.

11206763126_d16a8c8291



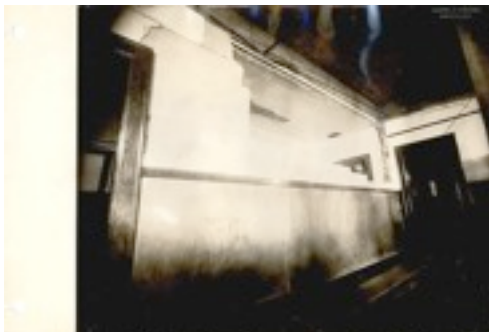
Halifax, N.S.: Interior of Alexander McKay School, showing the destructive force of the explosion.

11206841883_760be3e30c



Halifax, N.S.: Engine shed at Halifax, about one mile from the scene of the disaster.

11206751344_1711b029ed



Halifax, N.S.: Interior of Alexander McKay School.

11206750954_0b2375b3c9



Halifax, N.S.: Exterior of Round House about a mile from the scene of the disaster.

11206740235_cfde2bc3b3



Halifax, N.S.: Shops C.G.R. adjacent to the Round House.

11206761376_7b15b1814e



Halifax, N.S.: Another view of the Round House C.G.R.

11206861783_b3657b1b74



Halifax, N.S.: Repair shop of the C.G.R.

11206861483_308121b6a5



Halifax, N.S.: Interior of the C.G.R. Shop. (more likely, the North Street Station).

11206860883_4cf2fde34a



Halifax, N.S.: C.G.R. shops.

11206759506_d6024d4211



Halifax, N.S.: C.G.R. Round House.

11206758516_d0003277b9



Halifax, N.S.: Another view of the C.G.R. Round House.

11206736165_5eeac2979b



Halifax, N.S.: C.G.R. shops.

11206857933_aa76f1d301



Halifax, N.S.: C.G.R. shops.

11206734865_2c9b47b741



Halifax, N.S.: C.G.R. shops.

11206856793_d8fcb56f47



Halifax, N.S.: C.G.R. Depot.

11206734135_8d2ab1e38b



Halifax, N.S.: C.G.R. Depot.

11206743574_da92b266d1



Halifax, N.S.: House. Showing in this case, apparently, the downward force exerted by the explosion.

11206855753_c4a11bd7cd



Halifax, N.S.: House. Showing apparently the outward force exerted by the explosion.

11206742444_364baedaa7



Halifax, N.S.: The damage caused by the force of the explosion over a mile away from the scene of the disaster.

11206753976_61d68f1c1d



Halifax, N.S.: Another view showing freaks of the explosion.

11206741484_53dc87fc39



Halifax, N.S.: Damage caused by the explosion.

11206729794_4a0dfde805



Halifax, N.S.: Damage caused by the explosion.

11206731215_1d18cfaaf4



Halifax, N.S.: Damage caused by the explosion.

11206752366_2929186caf



Halifax, N.S.: Damage caused by the explosion.

11206751916_69f04d36c3



Halifax, N.S.: Damage caused by the explosion.

11206739374_7b92a97cd3



Halifax, N.S.: Damage caused by the explosion.

11206729435_758e3e101f



Halifax, N.S.: The dry docks to the right. The ruins in the center of the picture are all that remains of the Sugar Refinery. Hillis' Foundry may be observed on the hill on the left marked (x). The explosion occurred about 2000 feet north of this place.

11206851113_21e3f638ea



Halifax, N.S.: Interior of Alexander McKay School.

11206727835_697fec9400



Halifax, N.S.: The Administration Buildings for the Relief Commission erected at the foot of the Citadel, showing progress after 9 days work.

11206748156_f550260f73



Halifax, N.S.: The Governor McCall Apartments. Situated on Halifax Exhibition Grounds. Massachusetts Avenue on the left. Other streets are called Maine Avenue, Rhode Island Avenue and Endicott Avenue. 40 buildings, 8 Apartments each, for 320 families approximately 2000 people - built in 320 working hours by Reconstruction Committee. Work begun Christmas Day.

11206736094_4d311dac90



Halifax, N.S.: Apartment Houses. (Military Type) These buildings are 96 feet long, 46 feet wide and 2 stories high. They contain 16 Apartments each. View from Bell Road.

11206847923_9b2ce62897



Halifax, N.S.: Apartment Houses. (Military Type) These buildings are 96 feet long, 46 feet wide and 2 stories high. They contain 16 Apartments each. View from Bell Road.

11206735344_b2dd82d8bf



Halifax, N.S.: Dining-room and Bunk House immediately in the rear of the Alexander McKay School.

11206746476_2f6c231cd0



Halifax, N.S.: Governor McCall Apartments, showing coal sheds, one for each apartment at the end.

11206846673_ecb8ced51c



Halifax, N.S.: A bird's eye view of Governor McCall Apartments. Massachusetts Avenue 170 feet wide on left. Maine Avenue marked (x). Rhode Island Avenue marked (xx). Endicott Avenue marked (xxx). Photo taken on the day on which the last house was "roofed in". Note the American, British and French Flags.

11206745906_06075917af



Halifax, N.S.: Apartments on South Common. "Roofing in" the last building on Endicott Avenue.

11206745536_649bf012d3



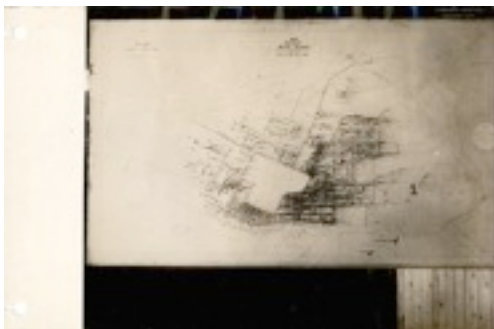
Halifax, N.S.: Apartments on South Common. "Roofing in" the last building on Endicott Avenue. (listed twice in the catalogue (68 & 71)

11206841063_238f8bc0d6



Halifax, N.S.: Temporary housing for workmen of contractor, clearing up devastated area.

11206745196_8621f7d38b



Halifax, N.S.: Plan of the City of Halifax. Each black dot represents a pin, which was placed on the original map to indicate that temporary repairs had been to the house. At the time photo was taken nearly 3000 houses had been temporarily repaired.

11206723855_3e15d07a0e



Halifax, N.S.: Governor McCall Apartments on Exhibition Grounds.

11206844763_04ddfb9ff1



Halifax, N.S.: Military Apartment Houses at foot of the Citadel.

11206723165_c3f904490b



Halifax, N.S.: View of progress of construction on South Common.

11206732264_451aca3668



Halifax, N.S.: Another view of progress of construction on South Common.

11206732064_6c61d860c9



Halifax, N.S.: Progress on the South Common, showing scenes under which working men labor.

11206843543_02744b9983



Halifax, N.S.: Last Apartment House of the Exhibition Grounds being "roofed in".

11206743196_1ed02b9b81



Halifax, N.S.: Showing the vagaries of the explosion.

11206843123_34ec35c385



Halifax, N.S.: Administration Buildings for the Halifax Relief Commission at the foot of the Citadel. Photo taken 5 days after work commenced.

11206721465_394f0e2fc6



Governor McCall Apartments, Massachusetts Avenue, Halifax, N.S. The largest apartment houses in the world, sheltering three hundred and twenty families or nearly 2,000 people. Erected by the Halifax Relief Commission to shelter some of the families rendered homeless by the explosion of December 6th, 1917. Completed in three hundred and twenty working hours. Photo taken on the occasion of the visit to Halifax of Governor Samuel W. McCall, November 8th, 1918. First Row – Boys and girls residing in Governor McCall Apartments. Second row, standing. Left to right – (1) E.F.

Horrigan, (2) Hon. Samuel W. McCall, Governor of Massachusetts, (3) G. Fred Pearson, Chairman Massachusetts –Halifax Relief Committee (Halifax Branch), (4) Capt. Hathaway, Governor's Aide, (5) Ralph P. Bell, Secretary Halifax Relief Commission, (6) Dr. G.B. Cutten, Director of Rehabilitation, Halifax Relief Commission. Last Row – Chauffeur, G. Landry, seated in car. Note – Massachusetts State flag flying on automobile with the Stars and Stripes.

11206729104_975b10fa4b